

ANTIQUE / ACREAGE / BUSINESS AUCTION

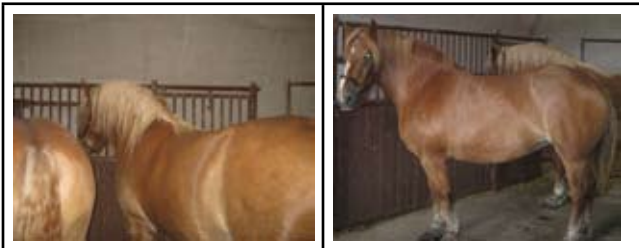
FOR DENNIS & LOUELLA CURTIS &

UNIVERSAL PAVING STONE INSTALLERS

51531 Rge. Rd. 225A, Sherwood Park, Alberta

SEPTEMBER 21, 2013 @ 10:00 A.M.

DIRECTIONS: Hwy. # 21 & Hwy. # 14 Junction go North ¼ Mile to Twp. Rd.520 go East ½ Mile to Rge. Rd. 225A (Doru Rd.) go South ¾ Mile to T-Intersection turn Left into Yard.



HORSES: Team of Belgian Work Horses, 8 Yrs. Old, Beautiful & Quiet *

HORSE DRAWN EQUIPMENT & BUGGIES: Peddlers Wagon, RESTORED * 2 Dr.'s Buggies, RESTORED * Meadow Brook Cart, RESTORED * Curtis Auto Buggy, RESTORED * Solid Oak Show Wagon, 10 Seater LIKE NEW * 6' Van Brandt Seed Drill IMMACULATE * Frost & Wood Mower * Massey Mower * IHC mower * Jones Chain Drive Mower RARE * Milwaukee Harvester Chain Drive Mower RARE * ALL MOWERS RESTORED TO WORKING ORDER * Massy Harris Bob Sleigh, ORIGINAL * JD Walking Plow * Cockshutt Garden Cultivator *2 Planet Jr. Seeders * Monarch Cistern Pump * 2 Pump Jacks * C.P. Station Wagon * Cast Iron Seats, Budlong & Frost & Wood * Dump Wagon, PARTIALLY RESOTRED * Eureka Reel Mower * Maxwell Reel Mower





TRACTORS: 1947 Farmall H * 1947 VA. Case * 1952 JD AR.* 1960's ACE, 4 WD Articulating Tractor, Home Built * 1997 JD 6400, 4 Speed Power Quad, MFD, Self Leveling Loader, Grapple, Cab, Air, 8900 hrs. *



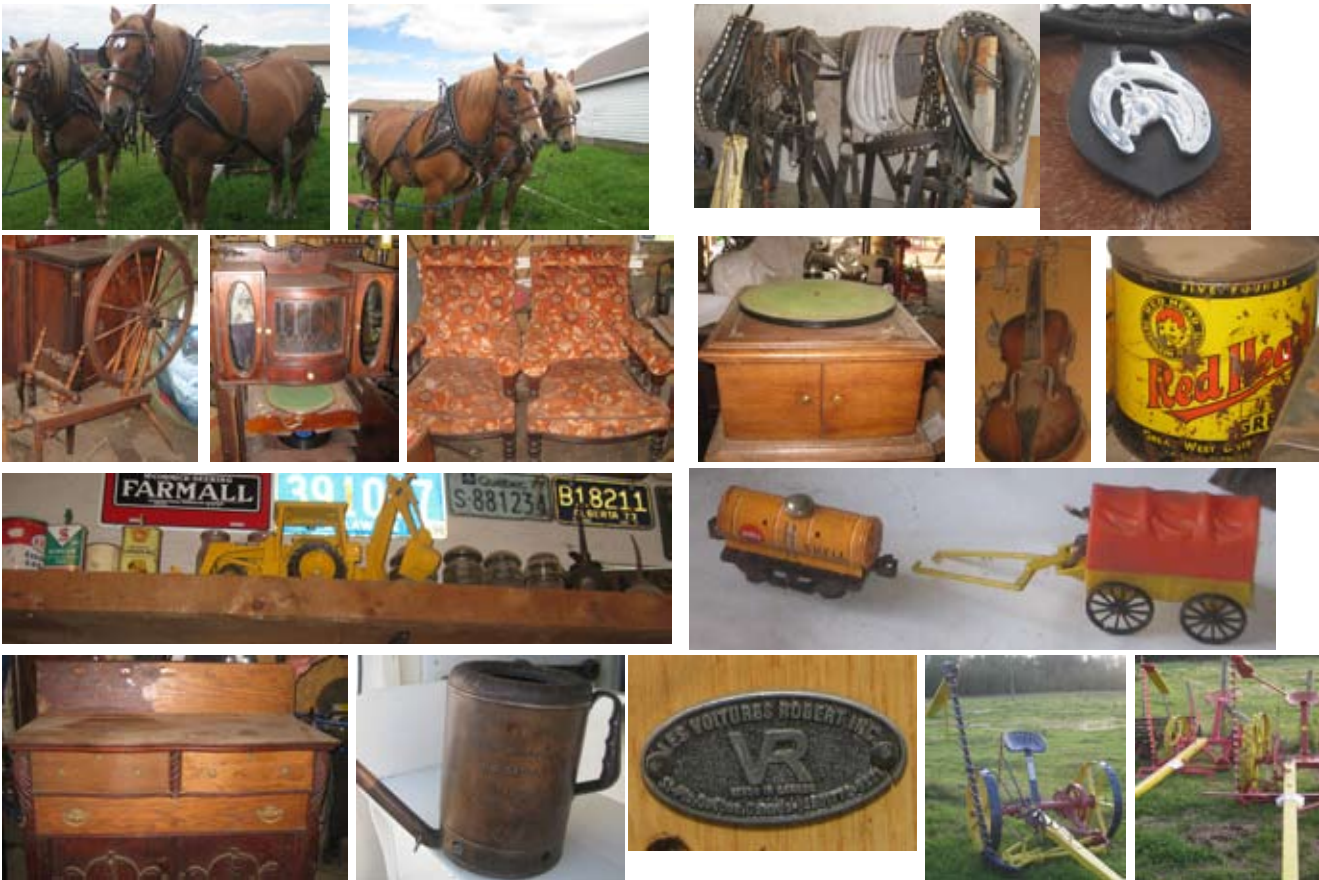
VEHICLES: 1998 GT Pontiac Sunfire * 1983 Buick Riviera * 1952 Chev. ½ Ton * Tow Truck Dollies * 1939 Truck Chassis, S.B. & Coated * Flathead Engine V8 * 1950 Mercury Flathead V8, Related Parts



*

SHOP TOOLS: Table Saw * Wood Lathe * Karcher Pressure Washer * Air Compressor * B & D Valve Grinder * Sioux Valve Seat Replacer * Spot Welder, 220 V.* Bench Grinder * McCullough Chain Saw * 1 Ton Ch. Hoist * Propane Heater * Utility Trailer *

ANTIQUES & HORSE EQUIPMENT: Show Harness, made by Georges Saddlery, Riley, Ab.* 2 - 26" Collars * Leather Working Harness * 2 - 24" Collars * 1904 Klingsor Gramophone * Victor Gramophone * 1880's Ornate Organ * Chaise Lounge & Chair * Spinning Wheel * Oak Side Board * Sewing Machine * Aladdin Lamps (2 Matching) * Coal Oil Lamps * Lanterns * Beam Scale * Sm. Scale * Gurney Platform Scale * Eastoria Fl. Lamp, Pat'd 1890 * 1918 & Up License Plates (Large Selection) * Oil Cans * Wagon Parts * Old Calvary Saddle * Old High Back Saddle * Neck Yokes * Eveners * Cast Iron Horse Tether * Dominion Well Pump * Sleigh Runners * Oil Pump * Old Hub Caps * 2-North Star 45 g. Drums * Imperial Oil 45 g. Drum * Scythe * Ice Saw * Swede Saw * Wagon Wheels * Old Steel Wheels * Set Wooden Harrows * Wrought Iron Bed *



FARM & YARD EQUIPMENT: 3pt. Side Livery Rake * 2-3pt. Plows * 3pt. Rear Blade * JD 14' Cultivator * 18' Allied Pony Cart * 10' Graham Holmes Cultivator * Cockshutt Grain Grinder * Cockshutt Grain Elev.* 8N Rear Pulley * Doal Loader & Bale Fork * McCloud 20' Gr. Elevator * Snapper Riding Mower * Snow Blower * Wheel Barrows * * & MORE...



MISCELLANEOUS: B & S Gas Engine, 5 hrsp. * B & S Water Pump, 3 hrsp. * Mineral Feeder * Horse Feeders * 500 G. Fuel Tank/Stand * Stock Tank * Tidy Tank * Calf Puller * Tow Bar * Steel Posts *Hoof Trimmers * Dog House * 4 x 8 Snooker Table * 2-250 g. Totes * Tires * 8' Truck Camper * 12' Aluminum Boat * 7.5 hrsp. Motor * Old Car Parts * Folding & Old Bicycles * Gates * Panels, Heavy Duty * Tack Box * Tack & MUCH MORE!....



UNIVERSAL PAVING STONE: Honda Powered Plate Tamper * Wet-Dry Diamond Blade Saw * Traffic Barricades* Transit Level * 13 Pallets (partial) New Paving Stone * Related Tools * Tool Box * & MUCH MORE..



TERMS: CASH / VALID CHEQUES ONLY!

NO PURCHASES TO BE REMOVED UNTIL PAID FOR!



Bill	@	780 984 1524
Sandy	@	780 984 0854
Home	@	780 929 2339



Horneman Auctions

Farm, Estate, Acreage, Miscellaneous, and Consignment Auctions

The Auctioneer(s) & Employees shall not be responsible for any loss or accident on or off the Sale Site. This is a guide only, subject to additions & deletions. Purchaser to satisfy themselves as to the condition, quality, measurements or items being sold. License # 331063.